

AGENDA

Meeting: Malmesbury Area Board
Place: Town Hall, Cross Hayes, Malmesbury SN16 9BZ
Date: Wednesday 14 March 2018
Time: 7.00 pm

The Area Board welcomes and invites contributions from members of the public. The chairman will try to ensure that everyone who wishes to speak will have the opportunity to do so.

If you have any requirements that would make your attendance at the meeting easier, please contact your Democratic Services Officer.

Refreshments and networking opportunity from 6:30pm .

Please direct any enquiries on this Agenda to William Oulton Senior Democratic Services Officer, direct line 01225 713935 or email william.oulton@wiltshire.gov.uk

All the papers connected with this meeting are available on the Council's website at www.wiltshire.gov.uk

Press enquiries to Communications on direct lines (01225) 713114 / 713115.

Wiltshire Councillors

Cllr Toby Sturgis, Brinkworth (Vice-Chairman)
Cllr Gavin Grant, Malmesbury
Cllr John Thomson, Sherston (Chairman)
Cllr Chuck Berry, Minety

RECORDING AND BROADCASTING NOTIFICATION

Wiltshire Council may record this meeting for live and/or subsequent broadcast on the Council's website at <http://www.wiltshire.public-i.tv>. At the start of the meeting, the Chairman will confirm if all or part of the meeting is being recorded. The images and sound recordings may also be used for training purposes within the Council.

By entering the meeting room you are consenting to being recorded and to the use of those images and recordings for broadcasting and/or training purposes.

The meeting may also be recorded by the press or members of the public.

Any person or organisation choosing to film, record or broadcast any meeting of the Council, its Cabinet or committees is responsible for any claims or other liability resulting from them so doing and by choosing to film, record or broadcast proceedings they accept that they are required to indemnify the Council, its members and officers in relation to any such claims or liabilities.

Details of the Council's Guidance on the Recording and Webcasting of Meetings is available on request.

Parking

To find car parks by area follow [this link](#). The three Wiltshire Council Hubs where most meetings will be held are as follows:

County Hall, Trowbridge
Bourne Hill, Salisbury
Monkton Park, Chippenham

County Hall and Monkton Park have some limited visitor parking. Please note for meetings at County Hall you will need to log your car's registration details upon your arrival in reception using the tablet provided. If you may be attending a meeting for more than 2 hours, please provide your registration details to the Democratic Services Officer, who will arrange for your stay to be extended.

Public Participation

Please see the agenda list on following pages for details of deadlines for submission of questions and statements for this meeting.

For extended details on meeting procedure, submission and scope of questions and other matters, please consult [Part 4 of the council's constitution](#).

The full constitution can be found at [this link](#).

For assistance on these and other matters please contact the officer named above for details

Items to be considered	Time
<p style="text-align: center;"><u>Hear about Youth Projects in the Malmesbury Area</u></p> <p>From 7:00 to 8:30, you will be able to focus on the needs of young people in the community area. The aim of the meeting is to raise awareness with stakeholders and partners in the local community of the needs and challenges of local youth provision. Furthermore, exploring local solutions to how they can be sustained, supported and financed to secure the future of these valuable projects.</p> <p>There will be a number of short presentations by local projects, followed by a networking opportunity to meet the people involved, and find out more from them. The schedule for the event is as follows:</p> <p>7.05 Introduction</p> <p>7.10 Presentations on each table from:</p> <ul style="list-style-type: none"> • Oaksey Youth Club • HEALS of Malmesbury • CMAS MTC Drop In • Gauzebrook group Youth Drop In cafe • Mind Reset Mental Health Project • Malmesbury Tennis Club • Riverside Youth Wind Band • Ashton Keynes Youth Café <p>7.40 Councillor Gavin Grant: Sustainable Youth with a quiz!</p> <p>7.45 Themed Tables for Networking and practice sharing</p> <p>8.15 Summary led by Councillor Gavin Grant.</p>	
<p>1 Chairman's Welcome and Introductions</p> <p>Following the end of the youth workshop, the Chairman will open the rest of the formal meeting.</p>	8.30 pm
<p>2 Apologies for Absence</p>	
<p>3 Minutes (<i>Pages 1 - 6</i>)</p> <p>To approve and sign as a correct record the minutes of the meeting held on 8 November 2017. The meeting of the 10 January 2018 was cancelled due to adverse weather conditions.</p>	

4 **Declarations of Interest**

To receive any declarations of disclosable interests or dispensations granted by the Standards Committee.

5 **Chairman's Announcements** (*Pages 7 - 12*)

The Chairman will provide information about:

- a) Supporting those with SEND into employment
- b) Supporting the Homeless
- c) Work Wiltshire Website

6 **Partner Updates** (*Pages 13 - 24*)

To receive updates from the following partners:

- a. Wiltshire Police
- b. Wiltshire Fire and Rescue Service
- c. Healthwatch Wiltshire
- d. Wiltshire Clinical Commissioning Group (CCG)
- e. Malmesbury and the Villages Community Area Partnership (MVCAP)
- f. Riverside Centre
- g. Health & Wellbeing Champion
- h. Highways Community Co-ordinator
- i. Town and Parish Councils

7 **Update From Community Engagement Manager**

An update will be provided by Ollie Phipps, Community Engagement Manager (CEM) for the Malmesbury community area including information about the Big Pledge.

8 **Area Board Funding** (*Pages 25 - 34*)

Councillors will be asked to consider the Community Area Grants report and make recommendations on the applications received:

- Malmesbury Concert Band £425.00
- Charlton Village Hall £900.00
- Malmesbury Community Radio £650.00
- Riverside Arts & Crafts Event £500.00

The meeting will also publicly ratify decisions held over from the cancelled January meeting.

9 **Community Area Transport Group** (*Pages 35 - 42*)

The Area Board will be asked to consider the recommendations from the September and December meetings of the Malmesbury Community Area Transport Group (CATG) meeting outlined in the report.

These recommendations are here for public ratification following the cancellation of the January meeting.

10 **Urgent items**

Any other items of business which the Chairman agrees to consider as a matter of urgency.

11 **Next Meeting**

The next meeting of the Malmesbury Area Board will be held on Wednesday, **2 May 2018**, 7.00 pm.
Please note that this is a new date.

MINUTES

Meeting: MALMESBURY AREA BOARD
Place: Oaksey Village Hall
Date: 8 November 2017
Start Time: 7.00 pm
Finish Time: 9.35 pm

Please direct any enquiries on these minutes to:

William Oulton Senior Democratic Services Officer, Tel: 01225 713935 or (e-mail) william.oulton@wiltshire.gov.uk

Papers available on the Council's website at www.wiltshire.gov.uk

In Attendance:

Wiltshire Councillors

Cllr Toby Sturgis (Vice-Chairman), Cllr Gavin Grant, Cllr John Thomson (Chairman) and Cllr Chuck Berry

Wiltshire Council Officers

Ollie Phipps, Community Engagement Manager
Richard Williams, Locality Youth Facilitator
Will Oulton, Democratic Services Officer

Town and Parish Councillors

Malmesbury Town Council – Councillors John Gundry and Kim Power
Oaksey Parish Council – Councillor Richard Moody
St Paul Malmesbury Without Parish Council – Councillor Roger Budgen,

Partners

Wiltshire Police – Insp Mark Luffman
Dorset and Wiltshire Fire and Rescue Service – Chris Harvey
Older Person's Champion – Ellen Blacker

Total in attendance: 48

<u>Agenda Item No.</u>	<u>Summary of Issues Discussed and Decision</u>
49	<u>Chairman's Welcome and Introductions</u> The Chairman welcomed all to the meeting.
50	<u>Apologies for Absence</u> Councillor John Mathews of Sherston PC gave his apologies.
51	<u>Minutes</u> The minutes of the previous meeting were considered. Resolved To approve and sign as a correct record the minutes of the meeting held on 6 September 2017.
52	<u>Declarations of Interest</u> There were no declarations of interest.
53	<u>Chairman's Announcements</u> a) Funding for priorities – The Chairman outlined the budget allocation spent in Malmesbury and highlighted the monies remaining. He asked Town & Parish Councils to consider how they could continue to work with the council to further protect priority areas. b) Opening Hours of Household Recycling Centre The opening hours of the HRCs during the refurbishment project were noted/ c) Local Plan previously called the Core strategy consultation Councillor Sturgis highlighted the ongoing consultation which would close on the 18 December and encouraged individuals and communities to participate. d) New Police Inspector Mark Luffman, the new Inspector for the area including Malmesbury, introduced himself to the meeting and gave a brief update on local issues and challenges.
54	<u>Dementia Friendly Awareness Presentation</u> Ollie Phipps gave a presentation and provided some training on what it means

	<p>to be a dementia friend.</p> <p>More information about becoming a dementia friend can be found here: https://www.dementiafriends.org.uk/</p>
55	<p><u>Carers Support Wiltshire</u></p> <p>Catharine Hurford gave a presentation on the work of Carers Support.</p> <p>Issues highlighted included: the role of carers and the challenges they face, including ill-health, depression and isolation, through the pressures of caring for loved one; the information, training and practical support that is available to carers in the Malmesbury community area; the support given to GPs to train them to provide better support to carers; the support given to employers to understand how they can understand their workers who also have caring responsibilities; how carers support is funded through local councils and fundraising; and the work identifying younger carers and the impact that has on their life-chances.</p>
56	<p><u>Food Banks</u></p> <p>Richard Payler, from the Malmesbury & District Foodbank gave an update on their work locally.</p> <p>Issues highlighted included: that the Foodbank started in 2014 by a cooperative of Churches Together and the Rotary; that the group is part of the Trussel trust network; the ways in which support is given including vouchers and physical donations; the extra support provided during summer holiday to supplement the loss of free-school-meals; how people are referred to the foodbank by professionals/representatives in the community; that repeat referrals may result in a conversation to see what additional support could be made to help assist them more; the training and support provided to volunteers; the multiple places where food can be donated, and how money can be donated; how other household and hygiene items may be required; how people in the villages can make contact with the group – and how more information about food poverty can be collected from the community; that parcels can be transported to people in the rural communities; the impact of universal credit on the use of foodbanks; and how links to other organisations can be expanded including community transport and local shops.</p>
57	<p><u>The Challenges Ahead</u></p> <p>The Chairman, Councillor John Thomson, gave an update on the issues and challenges for Wiltshire Council and the wider community in the future.</p> <p>Issues highlighted included: that meetings had taken place across the county to discuss with the community about the challenges faced by the Council; that some services are protected by increasing the volunteer support and partnerships with towns and parish councils; the activities that had taken place</p>

	<p>in the community area that have prevented people from using more expensive services; how towns and parishes can consider how they designate funding from their precept to support priority areas where there will be more demand; how the community area transport group can be seen as a model for co-funding; how parishes can identify priorities and how the county can support them; that on the 17th December there would be a training session and discussions at County Hall to start that debate; and how the policy for asset and service transfer has been simplified.</p>
58	<p><u>Local Youth Network Update and Applications for Youth Funding</u></p> <p>The meeting considered the report from the Local Youth Network which asked the Area Board to note the financial position of the Youth Funding allocation, and note the update on the Local Youth Network Management group work.</p> <p>The meeting also considered one applications detailed in the report together with the recommendations of the Local Youth Network (LYN) Management Group.</p> <p>Richard Williams, Local Youth Facilitator, presented the report and gave a summary of local issues, including: that he was happy to come and visit town and parish councils to discuss their needs assessments to identify what is required in the area, and that all parishes are welcome to attend the LYN meetings; that the current budget allocation would be expended if all the grants were approved; how young people are involved in partnership and the desire to expand the network to other community representatives to facilitate youth provision; how provision for young people identifying as LGTBQ+ in the community; the partnership approach taken to provision.</p> <p>With regard to the applications: the meeting heard that the GuazeBrook Group provided support in the Luckington village area through a drop-in group; and that two other applications had been approved under delegated authority powers by the officers, and were included in the report for the Area Board to noted.</p> <p>At the conclusion of the discussion, and having been put to the vote, the meeting;</p> <p>Resolved</p> <p>To award £500 to the Guazebrook Group to support the weekly drop in youth café in Luckington</p> <p>To note the following awards made under the delegated authority powers by the officer:</p> <ul style="list-style-type: none"> • The award of £1,000 to CMAS for Outreach work; and • The award of £1,500 to support LGTBQ+ support work.

59	<p><u>Community Updates</u></p> <p>Along with written reports, the meeting received the following updates from the community:</p> <p>Chris Harvey, the Fire Service watch manager in Malmesbury, updated the meeting on activities in support of safety and prevention; the fire safety officer working with the business to reduce extra call outs; how response times have changed due to incidents in more rural localities; the free visits available to help reduce fire risks; the active recruitment for extra cover staff.</p> <p>The Chairman thanked the officer for the updated and paid thanks to the service for its work in response to the Grenfell tragedy.</p> <p>The Riverside Centre gave an update on their activities including: the efforts made to increase access to groups from more rural locations; the work to support the repair café; the fundraising projects and events, including music concerts and the ambition to have other entertainment events; plans for future events including a Craft Fair, a Health & Wellbeing Day and Children’s Birthday Party Fayre; and the ambitions to connect with other groups in villages and share knowledge of activities to other village halls.</p> <p>The Chairman expressed his thanks for the update and hoped it would encourage more to contribute to their community by volunteering.</p> <p>The Malmesbury Area Health & Wellbeing Champion gave an update on local projects including: the success of the local lunch clubs, and the need for more volunteers; the expansion of men shed projects and the possibility of getting on started in Malmesbury; that the drop-in sessions in the library may move to the surgery to increase attendance; that some parishes had offered funding for the co-ordinator, enabling them to make better links to rural people; and the grants available for those in fuel poverty and how people can apply for the money.</p> <p>Cllr Richard Moody, Oaksey Parish Council, gave an update on issues of importance in the community including the neighbourhood plan, and the creation of affordable homes.</p> <p>In response to issues raised, the Chairman and Councillor Sturgis stated that they recognised that the local plan process for allocating housing was frustrating and reiterated the importance for large villages establishing robust neighbourhood plans and encourage communities to continue to engage positively with consultations.</p>
60	<p><u>Community Grant</u></p> <p>The meeting considered two community grant applications</p> <p>The first application was from the Friends of Ashton Keynes Primary School for</p>

	<p>a multipurpose play area. Representatives from the applicants gave a short presentation to the meeting clarifying that facility available to the school and for community and club use.</p> <p>Councillor Chuck Berry proposed that as a grant for another play area in the village had already been given that £2,500, representing 50% of the application, should be awarded.</p> <p>The second application was from the Wiltshire Wildlife Trust for £2,484 for resources and equipment to improve access and the use of the local nature reserve near Hankerton. A representative from the trust gave a short presentation outlining the works proposed.</p> <p>The Chairman proposed that the full grant should be awarded on the condition that the organization continue to work with local health and wellbeing partners and ask for a report back on how this has been achieved.</p> <p>At the conclusion of the debate, and after having been put to a vote, the meeting;</p> <p>Resolved</p> <ol style="list-style-type: none"> 1. To award £2,500 to Friends of Ashton Keynes Primary School for a multipurpose play area; and 2. To award £2,484 for resources and equipment to improve access and the use of the local nature reserve near Hankerton on the condition that the organization continue to work with local health and wellbeing partners and ask for a report back on how this has been achieved.
61	<p><u>Urgent items</u></p> <p>There were no urgent items.</p>
62	<p><u>Next Meeting</u></p> <p>The meeting noted that the next meeting of the Area Board would be held on Wednesday, 10 January 2018, 7.00 pm.</p>

Chairman's Announcement

Employment and Community Skills

Wiltshire Employment Support Team & Wiltshire Supported Internships

Contact: West.cc@wiltshire.gov.uk

Wiltshire Employment Support Team

Better known as WEST is a supported employment service for young people and adults with special educational needs and disabilities, including autism spectrum conditions. We aim to support our customers to find and keep a job.

We are part of the Special Educational Needs and Disabilities Service at Wiltshire Council. We also provide support to Adult Care customers, so we support people from 14+.

What is Supported Employment?

A well defined approach to helping people with disabilities participate in the competitive labour market, helping them to find meaningful job and providing ongoing support from a team of professionals.

Where do we work?

All over Wiltshire, if you meet eligibility and have a Wiltshire post-code, we can work with you.

Working with employers local to Wiltshire or within reasonable travelling distance, that could be in Hampshire, Swindon or other neighboring towns or counties.

What do we want?

For as many people to know of our service and that there is a pool of untapped talent and willing workforce in Wiltshire that could be of great benefit to employers.

We want the opportunity to meet with local employers to talk about their business and recruitment needs and negotiate positive employment opportunities for our customers.

Most of all we want to do what we can to level the playing field for people with higher support needs so they can compete to get jobs.

Research shows that only **6%** of people with a **learning disability** and **15%** of people with **autism**, are in paid employment, yet most want to work (Mencap).



The Team

We choose our Job Coaches for lots of different skills. Most of all their work ethic and what they can do to negotiate work opportunities with local employers. We know our stuff. We don't know everything, but we have a strong reputation.

The team are supportive, but they are not support workers.

Job Coaches specialise in employment, with the added bonus of previous backgrounds ranging from education to business.

Our priorities

Everyone has the right to work

and we are committed to helping people with higher support needs do that.

Getting a job is the top priority

supporting applications, interviews and on the job support. Speaking to employers and negotiating opportunities

The right support supporting customers in a person centred, but realistic way

Employer relationships employers in Wiltshire are our customers too and we value how pro-active and inclusive they can be. We work to maintain positive relationships and are on hand to provide support to them in making employing someone through our service smooth.

We only deal in paid work

If a paid job isn't what you are looking for then we are not the right service for you

We can signpost you to other places if you need it but we cannot support you with anything that isn't paid work. We don't want to lose our focus.

Community Connecting is another part of our wider team and they specialise in supporting people with inclusion to their local community, including joining a club, travel training and volunteer work.



Wiltshire Supported Internships

Supported Internships are designed for young people who really want to move into employment from education.

A study programme for a young person with learning disabilities or autism that want to move into employment and need extra support to do so. An important element is the opportunity for an extended work placement with the potential for a job offer at the end. We call these 'Working Interviews'.

'Aim to equip young people with the skills needed for work so they can achieve sustainable paid employment. The programme includes on-the-job training, backed by expert job coaches and college based learning'

Department for Education

What do we want from employers in Wiltshire?

a job vacancy that you are prepared to offer as a working interview with a view to becoming a paid job, **or**

a carved position that matches the intern where a paid position can be given when they display the skills required consistently

regular feedback that includes gaps in knowledge (support can then be put in place for this learning)

✚ Working interviews will ideally be 16 hours a week for an agreed length of time. Normally between 6-12 weeks

✚ hours can be flexible and could start on lower hours gradually increasing

We are asking for your involvement in the process and to consider reasonable adjustments to level the playing field for your intern



We are asking for a commitment to work with us, using a flexible approach to recruitment

Real job vacancies that have a real chance of becoming a paid job!

Who have we worked with?

We have successfully worked with many employers over the years, who have employed our customers, these include:

Morrisons	Warminster
NHS	Salisbury
Castle & Ball	Marlborough
Foxhangers	Devizes
Drove Primary	Swindon
Tool Station	Chippenham
Royal Oak	Corsham
Green Dragon	Market Lavington
MOD	Lyneham
Order of St Johns	Wooten Bassett
EMCOR	Porton Down
Bath Aquaglass	Bath
McDonalds	Trowbridge
Leekes	Melksham
Honey's Dog Food	Pewsey



We would love the opportunity to talk to you more about our team(s).

Please watch our video and we welcome any comments or queries

West.cc@wiltshire.gov.uk

Samantha Buchanan

REAL CHANGE WILTSHIRE

The best chance for a homeless person to get off the streets is with professional help from a charity or support organisation.

Making sure help reaches homeless people is far more effective than giving money to people on the street.

If you do want to donate, your small change can make a real change in Wiltshire – and a big difference to charities supporting the homeless.

Find out how you can help – www.wiltshire.gov.uk/realchangewiltshire

To notify the right people about a rough sleeper – www.streetlink.co.uk

#realchangewilts

Chairman's Announcements

Subject:	The new one-stop shop Work Wiltshire website
Contact Details:	https://workwiltshire.co.uk/

Key message:

On the 4th July, the new Work Wiltshire website launched. This is a unique website containing a huge range of education, employment and skills information which would normally have been located on several different sites and can now be found in one location with signposting to other relevant sites.

This website has been made to be accessible, attractive and a professional information hub. By having a one-stop-shop website, it will enable us to become the go-to place for career information, advice and signposting to relevant sites that the customers are looking for.

Work Wiltshire website contains information and links for: next steps in education, apprenticeships, information for employers, support available for those with barriers to work, information for those looking for work or wanting to upskill, financial support, further and higher education, local projects, support for schools and policies and data.

Questions:

How we set it up?

The Work Wiltshire website was originally created to support employers, employees and those looking for work. It then expanded to cover the programmes that the Employment and Skills Service were running, as well as providing career information, labour market intelligence, Wiltshire statistics, news and events and the services strategy.

The Employment and Skills service decided expand the website further and extend the range of audiences it catered for and allow them to access all the information they may need in one location. The redevelopment of the website was funded by Action 4 Wiltshire and has engaged with key stakeholders throughout the development to make sure that the website will work as effectively as possible and include tailored information to the different users.

Who were involved?

The main development of the website was conducted by the Employment and Skills Service at Wiltshire Council with stakeholders from Children's Services, Employment and Community Skills, local schools, Carer Support Wiltshire, Community First as well as others, contributing content and feedback to ensure the website is relevant, engaging and accessible.

Chairman's Announcements

What we are hoping to achieve?

A helpful and creditable website which enables local people and employers to find the key information and links they would like to know in one location.

Is this a model used elsewhere?

Other websites focus on specific sections which are included on the Work Wiltshire, but to our knowledge the combination of having all education, employment and skills information for young people, the general public, those with barriers to work and employers, all in one location is unique.

What has been the website take-up so far?

Since its launch we have had over 3,540 people use our website looking at 13,175 pages, with a wide variety of age demographics. The most popular pages so far being apprenticeships information for employers, apprenticeships, support for schools, and young people's next steps.

What can it do for people?

People will be able to search through the different sections on the website to find out education, employment and skills information. There is also a news section and events page, which shows the Employment and Skills service blog, local vacancies, Higher Education open days and much more.

It will help employers with find information and support for their business including how to set up an apprenticeship, free HR support, how business can get involved in local programmes, grants and other information.

It also has a dedicated section to help schools with careers education, giving information of local support, provision, the Wiltshire Careers Education Programme and support helping them arrange careers events.

It also has a section for those with complex needs and barriers to work; which highlights what support there is for them.



Malmesbury Community Policing Team (CPT) update January 2018



Hello and Happy New Year from all at Wiltshire Police. Please find attached your latest report.

The purpose of these reports is to provide a short summary of the local issues in your area. Engaging with the public is vital for us as. Not only does it give us an opportunity to share what we are doing and keep our communities informed and up to date but it also provides an opportunity for our communities to feed back to us; what we're doing well, where we can make improvements and how we can work together to tackle local issues.

We hope you find these updates useful, for the latest news, crime prevention advice and appeals please follow us on:

Twitter <https://twitter.com/wiltshirepolice>

Facebook <https://www.facebook.com/wiltshirepolice/>

Or sign up to Community Messaging <https://www.wiltsmessaging.co.uk/>

Thank you for your continued support to Wiltshire Police.

Crimes that have an impact on the community

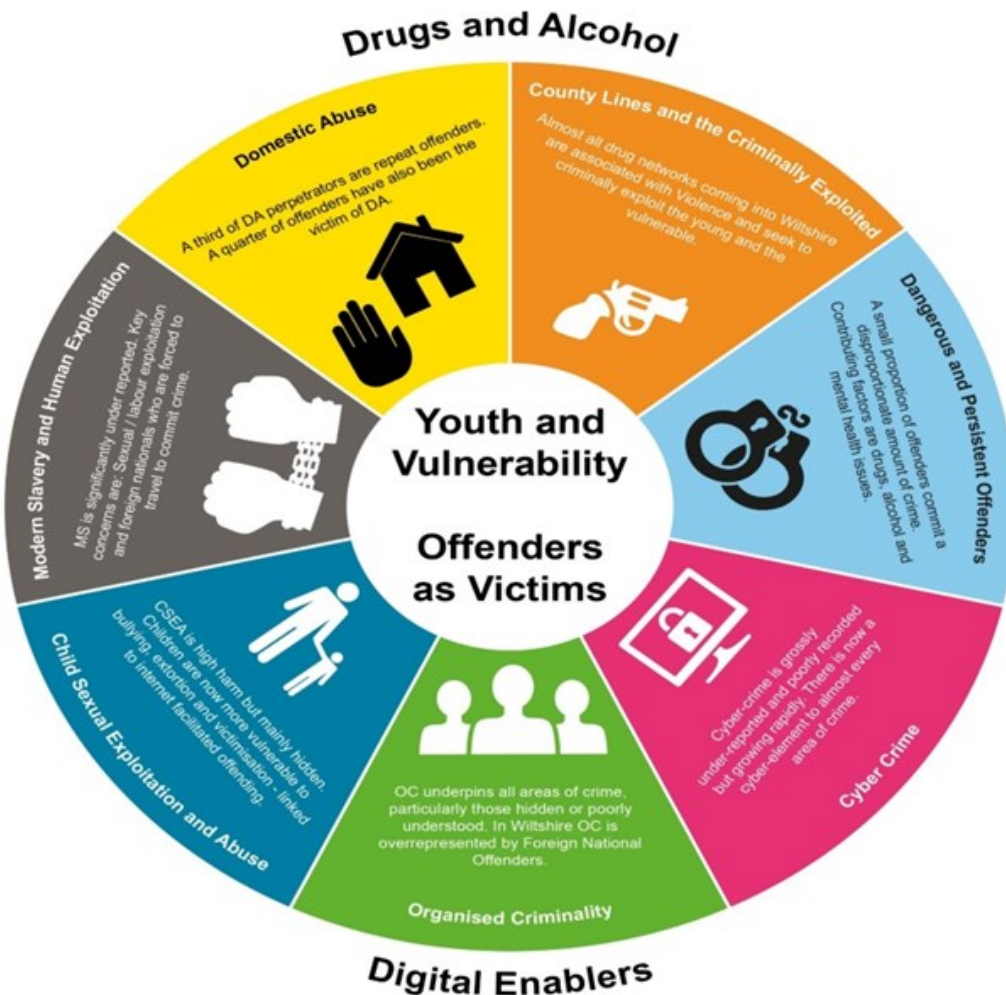
1st January 2018 to 4th March 2018

- ◇ Between midnight and 11:45 on the 6th January unknown suspect(s) have forced entry in to a property on the Green, Dauntsey, made an untidy search however nothing was stolen.
- ◇ Between 15:00 and 22:00 on the 14th January unknown suspect(s) have forced entry in to a property on Tetbury Road, Sherston and stolen 2 rings valued at £4000.
- ◇ Between 02:45 and 02:55 on the 19th January unknown suspect(s) have forced entry to Waitrose in Malmesbury and stolen the ATM machine from within.
- ◇ Between 09:00 and 17:30 on the 10th February unknown suspect(s) have gained entry in to a commercial business on the high street in Malmesbury and stolen £1000 from within.
- ◇ Between 15:00 on the 9th February and 15:00 on the 16th February unknown suspect(s) have forced entry to a shed at an address on the Street, Brinkworth however nothing was stolen.

CONTROL STRATEGY

Below is our control strategy for your reference. This focuses on where how we conduct our operational Policing based on the Police & Crime Plan. We will continue to align our resources with the threat/harm/risks presented in line with the control strategy.

Domestic abuse, Cyber Crime, Organised criminality, County lines and the criminally exploited, Dangerous and persistent offenders, Child sexual exploitation and abuse, Modern slavery and human exploitation.



Volunteers Wanted

Our volunteers help us do more by increasing our numbers and creating closer and more effective relationships with our communities. We are currently recruiting Police Vehicle Cleaning and Inventory volunteers to work across the Force within our Community Policing Teams.

For an application form and volunteer role description please visit the Wiltshire Police Website and you will find a volunteers section under the support Tab.



Thank You

Thursday the 1st March saw some of the worst weather conditions Wiltshire has seen in a number of years which continued in to the weekend. Whilst officers worked tirelessly to keep up with the policing demand a number of other agencies and members of the public also assisted, this a thank you to all those that helped during this period.





The link below is for Community Messaging. The Community Coordinator for this area sends out a daily message, if there has been any crime that will benefit the community to be aware of. This includes thefts, scams and burglaries, the aim is to inform you of what is happening in your area, help you take any actions to avoid becoming a victim of crime and to alert you as a potential witness to any crime. Its easy to sign up and only messages, relevant to your area, are sent to your email inbox.

<https://www.wiltsmessaging.co.uk/>

The email address for the Wiltshire North Community Policing team is
northwiltshirecpt@wiltshire.police.uk
Please phone 101, or 999 in an emergency to report any incidents or

This report has been prepared by PC 2608 Stuart Welch



People have their say over Wiltshire dementia care

People living with dementia and their unpaid carers have welcomed plans to provide a clearer pathway of care which would help people stay at home for as long as possible.

Local people in Wiltshire have given their views on proposals put forward by NHS Wiltshire Clinical Commissioning Group and Wiltshire Council to improve health and care services for those living with dementia in Wiltshire.

The proposals included providing a clear and consistent pathway for professionals, voluntary organisations and the public from the initial diagnosis of dementia onwards. This would involve a team of dementia specialists from different areas coming together to work alongside each other in one team and investing in more specialist nurses linked to the local GP practice.

Other plans include identifying a select number of care homes across the county to provide specialist care for people with the most complex needs.

The county's independent health and care champion Healthwatch Wiltshire spoke to members of the public last July and August about what they thought about the proposals and a new report ***Talking to people about dementia: a focus on support for people with the most complex needs*** has now been released which outlines their findings.

Lucie Woodruff, Healthwatch Wiltshire Manager, explained: "When the Wiltshire Dementia Strategy was first published in 2014, we formed a partnership with voluntary and community sector groups in the county to make sure the strategy delivered in practice what it promised on paper.

"The aim of this engagement was to enable the public to hear about how the dementia strategy is being put into practice and to have their say on new proposals for dementia care in Wiltshire."

Staff and volunteers at Healthwatch Wiltshire produced an online survey, hosted several public meetings around the county and visited care homes to get people's views about the proposals. They found:

- People thought it was important for those living with dementia to be able to stay at home for as long as possible, with 74% saying the proposal for a clearer pathway of care would enable this.
- They felt more resources should be allocated to support people to live in their homes.
- People emphasised that the proposal must include provision for support in a crisis if it is to be effective in enabling people living with dementia to stay at home for longer.
- There was also concerns about the impact that the proposal may have on carers and felt that adequate support for carers must be

Continued >



Contact us:

Tel 01225 434218

info@healthwatchwiltshire.co.uk

healthwatchwiltshire.co.uk

Healthwatch Wiltshire is the county's independent health and care champion. We listen to what people like about local health and care services, and what could be improved. These views are then shared with the decision-making organisations in the county, so together we can make a difference.

in place for it be successful.

- Those who were questioned thought there was a shortage of care home places for people with the most complex needs in Wiltshire, and the majority agreed that something should be put in place to address this issue.
- 78% of those who took part in the survey said that highly specialist dementia care should be provided in a small number of care homes.
- There was also widespread agreement that strong links and support from a team of dementia specialists could enable care homes to provide good quality care to this group of people.



One person said: “As a dementia champion, I have spoken to a lot of people with dementia who would rather stay in their own home for as long as possible. This proposal appears to offer that.”

Another carer added: “This will only work when focus is also placed on non-paid carers and that they also receive specialist support and respite to enable them to manage and cope with caring for the person with dementia.”

Others expressed concerns about the location of specialist care homes, whether there would be enough places to meet the demand and the potential impact on other care homes and their ability to care for people living with dementia.

The full report *Talking to people about dementia: a focus on support for people with the most complex needs* can be viewed at healthwatchwiltshire.co.uk/reports-publications and has been shared with Wiltshire NHS Clinical Commissioning Board and Wiltshire Council, so that they can use what people have told Healthwatch Wiltshire to inform their decisions about planning and providing dementia services in Wiltshire.

Ted Wilson, Director of Community and Joint Commissioning at Wiltshire Clinical Commissioning Group, said: “We know that people living with dementia want to stay at home and remain independent for as long as possible. The feedback people have provided to Healthwatch will be invaluable in informing the development of dementia services in Wiltshire to enable this to happen.”

Photos by Neil Munns

Copyright © 2018 Healthwatch Wiltshire. All rights reserved

healthwatch
Wiltshire
local health and care shaped by you

March 2018

Overview

NHS Wiltshire Clinical Commissioning Group (CCG) is responsible for commissioning a broad range of healthcare for the population of Wiltshire. We are led by experienced local GPs drawn from across the county, who provide clear clinical leadership to the big decisions affecting the future of healthcare provision in Wiltshire, carefully tailored to meet the differing needs of people locally.

Our vision is to ensure the provision of a health service which is high quality, effective, clinically-led and local. We are committed to delivering healthcare that meets the needs of Wiltshire people, to consult and engage with our population to enable them to be involved in decisions made about health services and to deliver those services to people in their own homes or as close to home as possible.

The right healthcare, for you, with you, near you

News from the CCG!

New service to support children and young people with their emotional wellbeing

The views of over 200 individuals from across Bath and North East Somerset, Swindon and Wiltshire have helped shape a modern service for children and young people with emotional wellbeing and mental health problems.

The new Child and Adolescent Mental Health Service (CAMHS) service starts on 1 April 2018 and will be delivered by Oxford Health NHS Foundation Trust. The service be providing targeted and specialist mental health and wellbeing support to children and young people aged 0-18 years, which includes having timely access to an integrated system of co-ordinated and effective promotion, prevention, early intervention and community support and treatment.

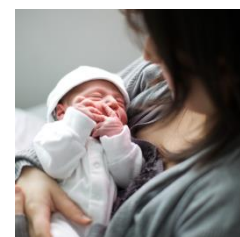
Ted Wilson, Director of Community Services and Joint Commissioning for Wiltshire CCG said: "With valuable input from young people across Wiltshire, Bath and North East Somerset and Swindon we have commissioned a mental health service that will better suit their needs, be easier for them to access and will provide improved advice and support."

National survey shows improvements in women's experiences of maternity care

Most women are having a positive experience of maternity care and treatment with the NHS, according to a survey of more than 18,000 people in England.

The Care Quality Commission (CQC) survey results reveal responses from women who had given birth in February 2017 in services run by 130 NHS trusts across the country.

Women were asked questions about all aspects of their maternity care from the first time they saw a clinician or midwife, during labour and birth, through to the care provided at home in the weeks following the arrival of their baby. The results highlighted improvements in areas such as choice on where to give birth, quality of information and access to help and support after giving birth.



The full results for England as well as individual results for each trust are available on the CQC's [website](#).

Find the right health care advice and treatment over the Easter bank holiday

The four day break over Easter can sometime catch people off guard when it comes to planning for their healthcare needs. With GP surgeries in Wiltshire closed on Friday 30 March and Monday 2 April 2018, Wiltshire CCG are asking people to plan ahead and consider the range of healthcare services available to them if they need medical advice or treatment over the bank holiday. To find out what health services are available visit our website: www.wiltshireccg.nhs.uk.

We also strongly recommend that people think ahead and check that they have enough of their routine medication to see them through the four day weekend. If you need to order more, it is advisable to request it well in advance of the bank holiday to ensure that you receive it in time.

A list of pharmacies that are open over the Easter bank holiday will be posted on the CCG's website nearer the time.

Focus on cancer

More than one in three people in England will develop some form of cancer during their lifetime.

Cancer can start almost anywhere in the human body, which is made up of trillions of cells. Normally cells grow and divide to form new cells when the body needs them. When cancer develops, old or damaged cells survive when they should die, and new cells form when they are not needed. These extra cells can divide without stopping and may form growths called tumours. These cancerous cells can invade and destroy surrounding healthy tissue, including organs.

There are more than 200 different types of cancer, and each one is diagnosed and treated in a particular way. The four most common types of cancer diagnosed in England are:

- [Breast cancer](#)
- [Lung cancer](#)
- [Prostate cancer](#)
- [Bowel cancer](#)

Spotting the signs

It is important to be aware of any unexplained changes to your body. If you notice any changes to your body's normal processes or unusual, unexplained symptoms – such as the sudden appearance of a lump, blood in your urine, or a change to your usual bowel habits, it's important to see your doctor so they can investigate. The chances are it is nothing serious, but it might be something that needs attention and if diagnosed earlier, treatment can be a lot more successful.

Click [here](#) for more information on cancer and spotting the signs and symptoms.

[Be clear on cancer – breast cancer in women over 70](#)

In England, one in three women who get breast cancer are aged 70 or over.



Breast cancer is the most common cancer in England with around 44,300 women diagnosed each year, of which around 13,500 (a third) are aged 70 and over. The older you are – the more likely you are to get it.

This campaign aims to get more women with breast cancer diagnosed at an early stage by raising awareness of the symptoms so it's important to get to know how your breasts look and feel normally, so that you will find it easier to spot something unusual.

A lump isn't the only sign of breast cancer. If you do notice any changes to your breast you should make an appointment to see your doctor straight away. It might not be anything serious, but if it is, getting a diagnosis early can make a real difference.

Campaigns

[Know the signs of a stroke and act F.A.S.T.](#)

We are encouraging you to learn the F.A.S.T. test to help you identify the early signs of a stroke and save more lives.



The F.A.S.T. test identifies the three most common symptoms of a stroke and the right action to take:

Face: Can the person smile? Has their mouth or eye drooped?

Arms: Can the person raise both arms?

Speech: Can the person speak clearly and understand what you are saying?

Time: call 999

If you recognise any single one of these symptoms of stroke, in yourself or others – CALL 999 straightaway. The sooner somebody who is having a stroke gets urgent medical attention, the better their chances of a good recovery.

Your pharmacy can help!

Your pharmacy team can help you with minor health concerns. Visit our [website](http://www.wiltshireccg.nhs.uk/local-services/pharmacies) to find out where your nearest pharmacy is: <http://www.wiltshireccg.nhs.uk/local-services/pharmacies>

Community pharmacists and pharmacy technicians are qualified healthcare professionals who can offer clinical advice and over the counter medicines to effectively and safely manage a range of minor health concerns, including:



- Sore throats
- Coughs
- Colds
- Tummy troubles
- Teething

Every pharmacist is trained in managing minor illnesses and providing health and wellbeing advice, so they are the right person to see for minor health concerns.

With over 12,000 pharmacies open every day of the week in England, and many offering extended opening hours in the evenings and weekends, it is easy to find a pharmacy close to you.

Pharmacists are healthcare experts who can give you clinical advice, right there and then, and if your symptoms are more serious, they can ensure you get the help you need.

Report to Malmesbury Area Board
Date of meeting 10.01.18
Title of report Community Area Grant funding

Purpose of the Report:

To consider a councillor-led initiative requesting funding from the Area Board.

Applicant	Amount requested
John Thomson	£2000.00

1. Background

Area Boards have authority to approve Area Grants under powers delegated to them. Under the Scheme of Delegation Area Boards must adhere to the [Area Board Grants Guidance](#)

2. Main Considerations

- 2.1. Councillors will need to be satisfied that funding awarded in the 2016/2017 year is made to projects that can realistically proceed within a year of it being awarded.
- 2.2. Councillors must ensure that the distribution of funding is in accordance with the Scheme of Delegation to Area Boards.
- 2.3. Councillors will need to be satisfied that the applications meet the Community Area Board grants criteria and practice papers for [councillor-led initiatives](#)
- 2.4. Best practice advises that applications relating to young people or highways and transport should be considered by, and seek a recommendation from, the Local Youth Network or Community Area Transport Group.

3. Environmental & Community Implications

Councillor led-projects are designed to enable councillors to tackle issues in their area, including projects and initiatives which have been initiated by the community eg. a community issue. Councillor-led projects should not be used to fill gaps where there are service shortfalls or where it is possible for the matter to be resolved through the use of the Community Area Grants scheme.

4. Financial Implications

Financial provision had been made to cover this expenditure. The Community Area Grants scheme which funds Councillor-led initiatives can only provide capital funding.

5. Legal Implications

There are no specific legal implications related to this report.

6. Human Resources Implications

There are no specific human resources implications related to this report.

7. Equality and Inclusion Implications

Community Area Boards must fully consider the equality impacts of their decisions in order to meet the Council's Public Sector Equality Duty.

8. Safeguarding Implications

The Area Board has ensured that the necessary policies and procedures are in place to safeguard children, young people and vulnerable adults.

9. Applications for consideration

Application Name	Provider	Project Proposal	Requested
Safe Walking to School Lights	Wiltshire Council	John Thomson	£2000.00
Project description As the Malmesbury Community Area is a very rural part of the county with 10 primary schools. Many of the schools have limited parking and require children and families to walk from the parked car to the school or from their homes in the wider village. Area Board would like to fund for 200 'million mile lights' for the children and 20 books (2 per school) for the schools to promote safe walking to school. The books share a message about walking safely to and from school. The lights flash and are powered to the motion of the child as the walk and are attachable in many ways to clothing or bags.			
Proposal That the Area Board determines the application from John Thomson for £2000.00			

Background documents used in the publication of this report:

Quotes/estimates for this proposal can be obtained from the Community Engagement Manager upon request.

Report Author Name, Ollie Phipps Title: Community Engagement Manager
Tel: 01249 709404 Email: ollie.phipps@wiltshire.gov.uk

Report to Malmesbury Area Board
Date of meeting 10/01/2018
Title of report Community Area Grant funding

Purpose of the Report:

To consider the applications for funding listed below.

Applicant	Amount requested
Hankerton Amenity Area	£5000.00
Art Lift – Abbey Group	£300.00

1. Background

Area Boards have authority to approve Area Grants under powers delegated to them. Under the Scheme of Delegation Area Boards must adhere to the Area Board Grants Guidance available here: <http://www.wiltshire.gov.uk/community-area-grants-criteria-2015-16-april.pdf>

The funding criteria and application forms are available on the council's website: <http://www.wiltshire.gov.uk/council/areaboards/areaboardscommunitygrantsscheme.htm>

2. Main Considerations

- 2.1. Councillors will need to be satisfied that funding awarded in the 2015/2016 year is made to projects that can realistically proceed within a year of it being awarded.
- 2.2. Councillors must ensure that the distribution of funding is in accordance with the Scheme of Delegation to Area Boards.
- 2.3. Councillors will need to be satisfied that the applications meet the Community Area Board grants criteria.

3. Environmental & Community Implications

Grant Funding will contribute to the continuance and/or improvement of cultural, social and community activity and wellbeing in the community area, the extent of which will be dependent upon the individual project.

4. Financial Implications

Financial provision had been made to cover this expenditure.

5. Legal Implications

There are no specific legal implications related to this report.

6. Human Resources Implications

There are no specific human resources implications related to this report.

7. Equality and Inclusion Implications

Community Area Boards must fully consider the equality impacts of their decisions in order to meet the Council's Public Sector Equality Duty.

Community Area Grants will give local community and voluntary groups, Town and Parish Council's equal opportunity to receive funding towards community based projects and schemes, where they meet the funding criteria.

8. Safeguarding Implications

The Area Board has ensured that the necessary policies and procedures are in place to safeguard children, young people and vulnerable adults.

9. Applications for consideration

Application ID	Applicant	Project Proposal	Requested
ID 2656 (hyper link)	Hankerton Parish Council	Hankerton Amenity Area	£5000.00
<p>Project description</p> <p>This project is focused on the purchase and installation of play equipment in the village of Hankerton. There are a growing number of young families moving into the village and currently there is no communal area for children to play together. A site has been set aside but we need to raise funds to purchase suitable play equipment. The creation of this play area would be a great boost to the village and the young people in the parish and help encourage them to play outdoors and socialise with other local families.</p> <p>Input from Community Engagement Manager:</p> <p>This project has been community led and has engaged many residents and families in the village to ensure the transformation of the amenity space. This land has been given to the village as part of a housing development. The village has had a growth in families meaning the development of the land into a family friendly usable space has become a priority. There is no other safe space for family play in this village, therefore I fully support this project and the work & enthusiasm contributed by the local community to make this happen.</p>			
<p>Proposal</p> <p>That the Area Board determines the application from Hankerton Parish Council for £5000.00</p>			
Application ID	Applicant	Project Proposal	Requested
ID 2644 (hyper link)	C/O: David Davies	Art Lift – Abbey Group	£300.00
<p>Project description</p> <p>Members have come through Art lift health and wellbeing programme at Malmesbury Primary Care Centre which is a local GP referral public health scheme and want to continue to meet weekly and welcome new members. The group aims to create a self-running sustainable safe and welcoming environment where we can support and encourage creativity towards increased positive mental health confidence networks peer support and friendships and reduce the impact of isolation. We aim to show out work locally and raise funds through subscription and sale of our work. We have minimal running costs as we have negotiated a rent free venue which is accessible well managed and has support at hand if we need it.</p> <p>Input from Community Engagement Manager:</p>			

This group is an incredibly important resource for those involved. This is the second group to evolve from the Malmesbury GP practice, proving a valuable asset and continued success from the pilot group. Artlift works with artists that challenge themselves, are professionally trained in art form and well networked across the arts community. All Artlift artists are trained in Safeguarding and undergo regular Clinical Supervision. The support of this project is important for the sustainability of the group whom are setting out on their own.

Proposal

That the Area Board determines the application from Art Lift – Abbey Group for £300.00

No unpublished documents have been relied upon in the preparation of this report

Report Author Name, Ollie Phipps Title: Community Engagement Manager
Tel: 01249 709404 Email: ollie.phipps@wiltshire.gov.uk

Report to Malmesbury Area Board
Date of meeting 14/03/2017
Title of report Community Area Grant funding

Purpose of the Report:
 To consider the applications for funding listed below.

Applicant	Amount requested
Malmesbury Concert Band	£425.00
Charlton Village Hall	£900.00
Malmesbury Community Radio	£650.00
Riverside Arts & Crafts Event	£500.00

1. Background

Area Boards have authority to approve Area Grants under powers delegated to them. Under the Scheme of Delegation Area Boards must adhere to the Area Board Grants Guidance available here: <http://www.wiltshire.gov.uk/community-area-grants-criteria-2015-16-april.pdf>

The funding criteria and application forms are available on the council's website: <http://www.wiltshire.gov.uk/council/areaboards/areaboardscommunitygrantsscheme.htm>

2. Main Considerations

- 2.1. Councillors will need to be satisfied that funding awarded in the 2015/2016 year is made to projects that can realistically proceed within a year of it being awarded.
- 2.2. Councillors must ensure that the distribution of funding is in accordance with the Scheme of Delegation to Area Boards.
- 2.3. Councillors will need to be satisfied that the applications meet the Community Area Board grants criteria.

3. Environmental & Community Implications

Grant Funding will contribute to the continuance and/or improvement of cultural, social and community activity and wellbeing in the community area, the extent of which will be dependent upon the individual project.

4. Financial Implications

Financial provision had been made to cover this expenditure.

5. Legal Implications

There are no specific legal implications related to this report.

6. Human Resources Implications

There are no specific human resources implications related to this report.

7. Equality and Inclusion Implications

Community Area Boards must fully consider the equality impacts of their decisions in order to meet the Council’s Public Sector Equality Duty.

Community Area Grants will give local community and voluntary groups, Town and Parish Council’s equal opportunity to receive funding towards community based projects and schemes, where they meet the funding criteria.

8. Safeguarding Implications

The Area Board has ensured that the necessary policies and procedures are in place to safeguard children, young people and vulnerable adults.

9. Applications for consideration

Application ID	Applicant	Project Proposal	Requested
ID 2710 (hyper link)	Malmesbury Concert Band	Portable Battery powered PA	£425.00
<p>Project description</p> <p>The Malmesbury Concert Band requires a portable battery powered PA for use in outdoor venues that do not have mains power such as the Market Cross Malmesbury Bandstands in Municipal Parks Fetes and other outdoor events. The PA would also be used in locations both indoors and outdoors with mains power. It also has the ability to play recorded music for example from an iPhone and this would be a great asset in rehearsal.</p> <p>Input from Community Engagement Manager:</p> <p>This piece of equipment will allow the group to perform in more diverse locations, and gives them more opportunities to perform, including community events.</p>			
<p>Proposal</p> <p>That the Area Board determines the application from Malmesbury Concert Band for £425.00</p>			

Application ID	Applicant	Project Proposal	Requested
ID 2744 (hyper link)	Charlton Village Hall	Hall Repairs	£900.00
<p>Project description:</p> <p>To replace deteriorating timbers on gable ends and to treat all external cladding with stain and preservative excluding the lowest timbers treated in 2016. It is believed that the gables have not been treated for thirty years.</p> <p>Input from Community Engagement Manager:</p> <p>Repairs and essential maintenance are critical to village hall for a sustainable future. These facilities are a vital part and at the heart of these rural communities, ensuring they kept up to safe standard secures a sustainable future for the building at its users. Charlton Village Hall committee have offered free use of the hall for their coffee morning group for a number of sessions over 6 months in return for grants received.</p>			
<p>Proposal</p> <p>That the Area Board determines the application from Charlton Village Hall for £900.00</p>			

Application ID	Applicant	Project Proposal	Requested
ID 2745 (hyper link)	Malmesbury Community Radio	Community Radio Project	£650.00
<p>Project description: Flying Monk Community Projects are a Community Interest Company based in Malmesbury. We are applying to the Area Board to support Malmesbury Carnival Community Radio 2018. During the 2017 Carnival we ran a pilot version of the radio project for 10 days and in 2018 we will run the Carnival Radio again on a larger scale involving more people and broadcasting for longer hours. We would like to apply to support the purchase of a sound desk two studio microphones for the shed studio and a set of lapel microphones for interviewing.</p> <p>Input from Community Engagement Manager: This community radio project has a pilot last year using borrowed equipment and is returning for a 2nd year and plans to extend its provision, ideally to weekend community radio. The team behind it have been focusing on sharing local peoples stories, projects and activities that happen at the time of the summer carnival. They have also stated they would offer the purchased equipment out for use by community groups wishing to record and document their projects.</p>			
<p>Proposal That the Area Board determines the application from Malmesbury Community Radio for £650.00</p>			

Application ID	Applicant	Project Proposal	Requested
ID 2785 (hyper link)	Riverside Arts & Crafts Workshop	Friends of Riverside	£500.00
<p>Project description: To provide a day of arts and crafts taster sessions with local artists photographers and crafters to engage and encourage local people to take up new arts and crafts or to expand what they already do. We anticipate this will provide a legacy of new classes art display options expanding the local cultural offering. This will also provide opportunities for those who may be socially isolated for whatever reason to meet others thereby promoting a sense of wellbeing and involvement in their community.</p> <p>Input from Community Engagement Manager: The current JSA identifies a lack of cultural opportunities re arts and crafts plus a need for older people and other ages to be supported more in their communities in order to promote wellbeing and a sense of community resilience. By providing a free Arts and Crafts Day with a legacy of classes groups and other opportunities they will go some way to fulfilling these prioritised needs. They would like to provide local artists photographers and crafters with a free open day with support for the costs of materials and equipment if as required so that local people of all ages can have tasters and experience a wide range of activities all for free. They wish to provide an ongoing display of local arts photographs and crafts. Any materials left over from the day will go to appropriate classes activities to help them provide lower cost opportunities for local residents.</p>			
<p>Proposal That the Area Board determines the application from Friends of Riverside for £500.00</p>			

No unpublished documents have been relied upon in the preparation of this report

Report Author Name, Ollie Phipps Title: Community Engagement Manager
Tel: 01249 709404 Email: ollie.phipps@wiltshire.gov.uk

MALMESBURY COMMUNITY AREA TRANSPORT GROUP (CATG)

NOTES OF THE MALMESBURY COMMUNITY AREA TRANSPORT GROUP (CATG) MEETING HELD ON 12 SEPTEMBER 2017 AT RIVERSIDE COMMUNITY CENTRE, GLOUCESTER ROAD,, MALMESBURY, SN16 9JS.

5 **Note Tracker**

Please refer to the attached Note Tracker.

If you have any questions about the attached Note Tracker please contact:

Martin Rose

direct line: 01225 713476

e-mail: Martin.rose@wiltshire.gov.uk

This page is intentionally left blank

Document is Restricted

This page is intentionally left blank

MALMESBURY COMMUNITY AREA TRANSPORT GROUP (CATG)

NOTES OF THE MALMESBURY COMMUNITY AREA TRANSPORT GROUP (CATG) MEETING HELD ON 5 DECEMBER 2017 AT RIVERSIDE COMMUNITY CENTRE, GLOUCESTER ROAD, MALMESBURY, SN16 9JS.

6 **Note Tracker**

Please refer to the attached Note Tracker.

If you have any questions about the attached Note Tracker please contact:

Martin Rose

direct line: 01225 713476

e-mail: Martin.rose@wiltshire.gov.uk

This page is intentionally left blank

Document is Restricted

This page is intentionally left blank